

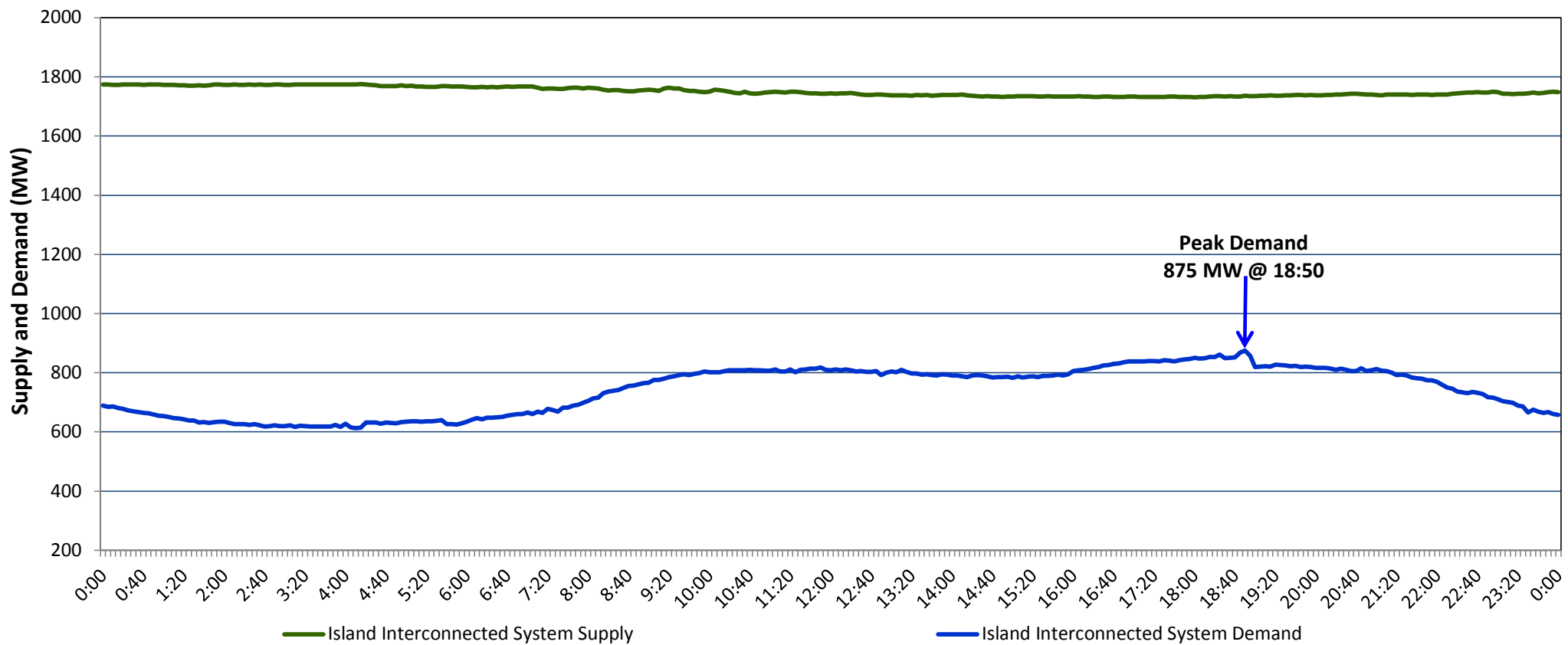
Newfoundland Labrador Hydro (NLH)

Supply and Demand Status Report Filed Monday, October 16, 2017

Section 1

Island Interconnected System Supply and Demand

Actual 24 Hour System Performance For Sunday, October 15, 2017



Supply Notes For October 15, 2017

1,2

A As of 0827 hours, July 31, 2017, Holyrood Unit 2 unavailable due to planned outage 165 MW (170 MW).

B As of 1229 hours, September 22, 2017, Stephenville Gas Turbine available at 25 MW (50 MW).

C As of 1211 hours, October 01, 2017, Cat Arm Unit 2 unavailable due to planned outage (67 MW).

Section 2

Island Interconnected Supply and Demand

Mon, Oct 16, 2017			Island System Outlook <sup>3</sup>	Seven-Day Forecast	Temperature (°C)		Island System Daily Peak Demand (MW)
					Morning	Evening	
Available Island System Supply: <sup>5</sup>			1,760 MW	Monday, October 16, 2017	15	12	895
NLH Generation: <sup>4</sup>			1,430 MW	Tuesday, October 17, 2017	6	4	1,025
NLH Power Purchases: <sup>6</sup>			145 MW	Wednesday, October 18, 2017	3	3	1,085
Other Island Generation:			185 MW	Thursday, October 19, 2017	6	6	1,030
Current St. John's Temperature:			16 °C	Friday, October 20, 2017	9	9	945
Current St. John's Windchill:			N/A °C	Saturday, October 21, 2017	6	5	1,045
7-Day Island Peak Demand Forecast:			1,105 MW	Sunday, October 22, 2017	5	6	1,105

Supply Notes For October 16, 2017

3

- Notes:
1. Generation outages for running and corrective maintenance are included. These are not unusual for power system operations. They generally do not impact customer supply. The power system operators schedule outages to system equipment whenever possible to coincide with periods when customer demands are low and sufficient supply reserves are available. However, from time to time equipment outages are necessary and reserves may be impacted.

2. Due to the Island Interconnected System being isolated from the larger North American grid, when there is a sudden loss of large generating units some customer's load must be interrupted for short periods to bring generation output equal to customer demand. This automatic action of power system protection, referred to as under frequency load shedding, is necessary to ensure the integrity and reliability of system equipment. Under frequency events typically occur 5 to 8 times per year on the Island Interconnected System and the resultant customer load interruptions are generally less than 30 minutes.

3. As of 0800 Hours.

4. Gross output including station service at Holyrood (24.5 MW) and improved NLH hydraulic output due to water levels (35 MW).

5. Gross output from all Island sources (including Note 4).

6. NLH Power Purchases include: CBPP Co-Gen, Nalcor Exploits, Rattle Brook, Star Lake, Vale capacity assistance (when applicable), and Wind Generation.

Section 3

Island Peak Demand Information

Previous Day Actual Peak and Current Day Forecast Peak

Sun, Oct 15, 2017	Actual Island Peak Demand <sup>8</sup>	18:50	875 MW
Mon, Oct 16, 2017	Forecast Island Peak Demand		895 MW

Notes:

8. Island Demand is supplied by NLH generation and purchases, plus generation owned and operated by Newfoundland Power and Corner Brook Pulp & Paper (Deer Lake Power, DLP).